



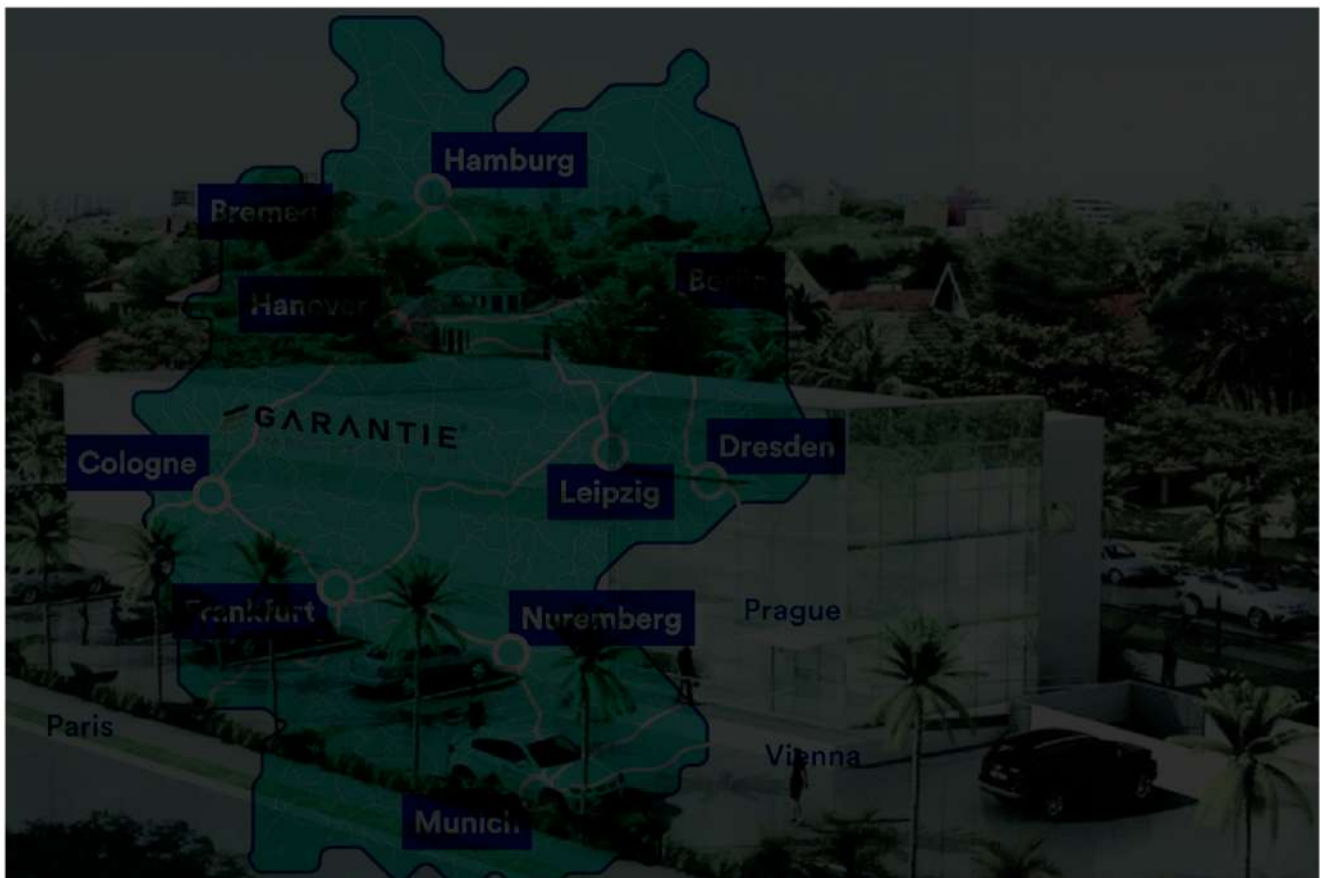
GÄRÄNTIE[®]
IMPLANT SYSTEM

Invented to last
by professionals to professionals

OUR FACTORY	3
PRODUCTION	4
CERTIFICATES	6
QUALITY “ MATERIALS & MACHINES ”	7
SURFACE TREATMENT HNS	8
GARANTIE GMBH	11
ENTER-CONEX	12
OUR FAMILY	13
9 LINE	14
PACKAGING	15
GARANTIE LINES	
SML LINE	16
SL LINE	17
EP LINE	19
TX LINE	21
SHORT LINE	23
HEALING COMPONENTS	25
ACCESSORIES	
IMPRESSION AND ANALOGUE	26
UCLA & PEEK	27
ABUTMENT	
STRAIGHT ABUTMENT	28
ANGLED ABUTMENT	29
DIGITAL	
DIGITAL ACCESSORIES	31
WINGS FLAGGY SCANBODY	33
MULTI-USE	
MULTI-USE ABUTMENT	34
MULTI-USE ACCESSORIES	35
OVERDENTURE	37
GARANTIE KIT	
COMPACT SURGICAL KIT	39
COMPACT KIT	41
SMALL KIT	42
ART PROSTHETIC KIT	43
GARANTIE DRILLS	
DRILLS	44
LANCE & PILOT	45
EP DRILLING PROCEDURE	46
TX DRILLING PROCEDURE	49
COMING SOON	
* ADVANCED SURGICAL KIT	52
* GUIDE SURGICAL KIT	52

GÄRÄNTIE[®] I M P L A N T S Y S T E M

GARANTIE GmbH is a German leading company in the oral implantology sector. It specializes in manufacturing and designing dental implants, fixation screws, dental instruments and bone regeneration materials. Passion for dentistry and top quality are our belief. Our products designed by professionals of engineering and teamwork of dentists for dentists and their visitors.



Quality Control

GARANTIE GmbH packs its products in Clean Rooms / Clean Room, with strict particle controls and environmental control. This environment was designed to maintain the integrity and quality of products.

The dental implants and bone regeneration materials are packaged in ISO 7



Quality Control

* Classified room. Contains HEPA filters that ensures 3 .000 particles per cubic meter, with 40 air renovations in two minutes. The prosthetic and surgical components are packed in a clean room classified as ISO 8.

* Classification according to ISO 14644-1.



- EUROPE

- CE MARK

- Conformity product certification with European Community standards.

- TUV

- INFARMED

- Conformity product certification with Portuguese standards.

- USA

- FDA

- Conformity product certification with American standards.



 **GÄRÄNTIE**[®]
IMPLANT SYSTEM



Quality

Titanium

Source of our titanium: ASTM F67 from Titanium Industries U.S.A.
 As the global leader and one of oldest American companies in distributing specialty metals, which provides quality products with over 18 worldwide locations, T.I. is proud to provide specialty metals such as Titanium, Nickel, Stainless Steel, Cobalt Chrome, Alloy Steels, Aluminum, Carbon Steels and more in many product forms ,
 Plus a wide range of approvals from most leading OEM's across Aerospace, Medical, Industrial, and Oil and Gas markets.



ISO
9001:2015



CNC MACHINES PRODUCTION

We have latest generation German and Swiss CNC machines managed by GARANTIE's staff to ensure the highest level of accuracy.

Garanti GmbH brand has purchased some designs, technology and patents, which have already been established since 1998, and most of them have been developed to the latest level, using the most accurate and latest devices, raw materials and machines (German, Swiss and American).

HNS® HYDROPHILIC & NANO Surface Treatment

Advantages of HNS® HYDROPHILIC & NANO surface treatment

01 Faster and better healing

02 Complex surface design with significant surface enlargement

03 High hydrophilic reaction with blood

04 Increased primary stability with reduced healing time

05 Active support of bone attachment

06 Higher application security

07 Possible diversification of indications (early loading immediately loading)

08 Higher osteoconductivity of the surface

09 Outstanding biocompatibility

10 Thin coating

11 Microcrystalline structure, large open surface

12 High solubility and controlled resorption area

13 Complete coverage of porous surfaces and complex implant geometries

14 Microporosity with high capillary effect on body fluids

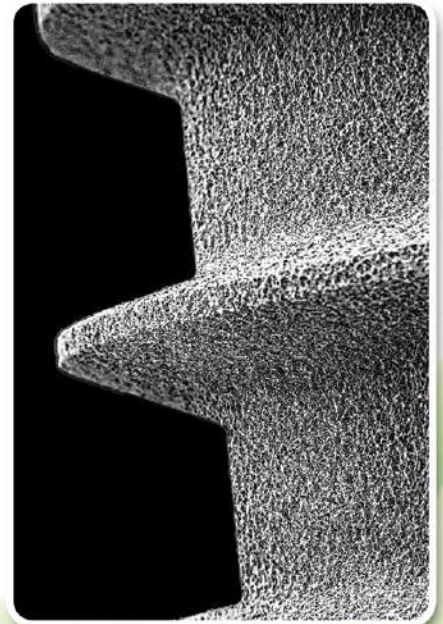
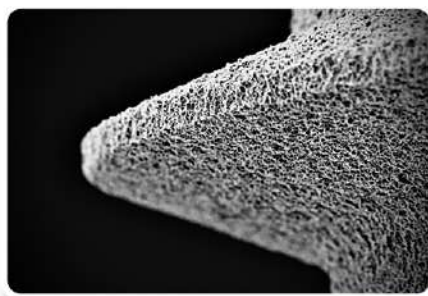
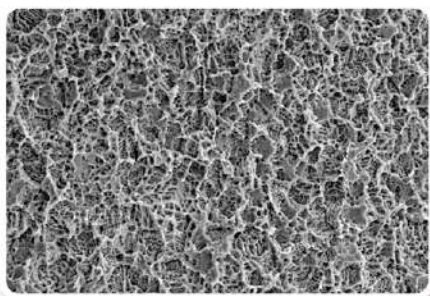
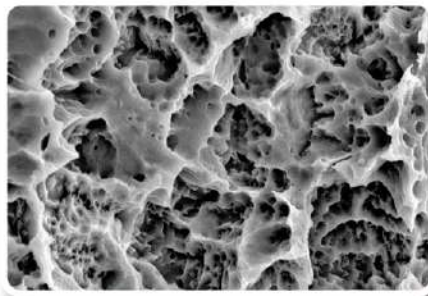
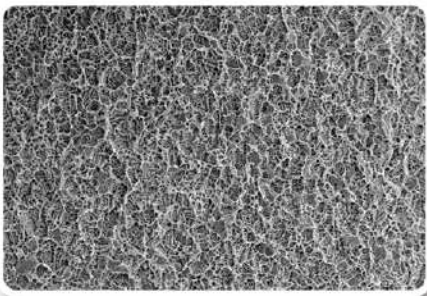
15 Microstructured bioactive antibacterial surfaces for GARANTIE® dental implants

HNS[®] HYDROPHILIC & NANO Surface Treatment

Advantages of HNS[®] HYDROPHILIC & NANO surface treatment

The Nano surface is 100% Aluminium Free, and every part of the process is realized automated machines, that promotes the immersion in different acids with properly controlled temperatures.

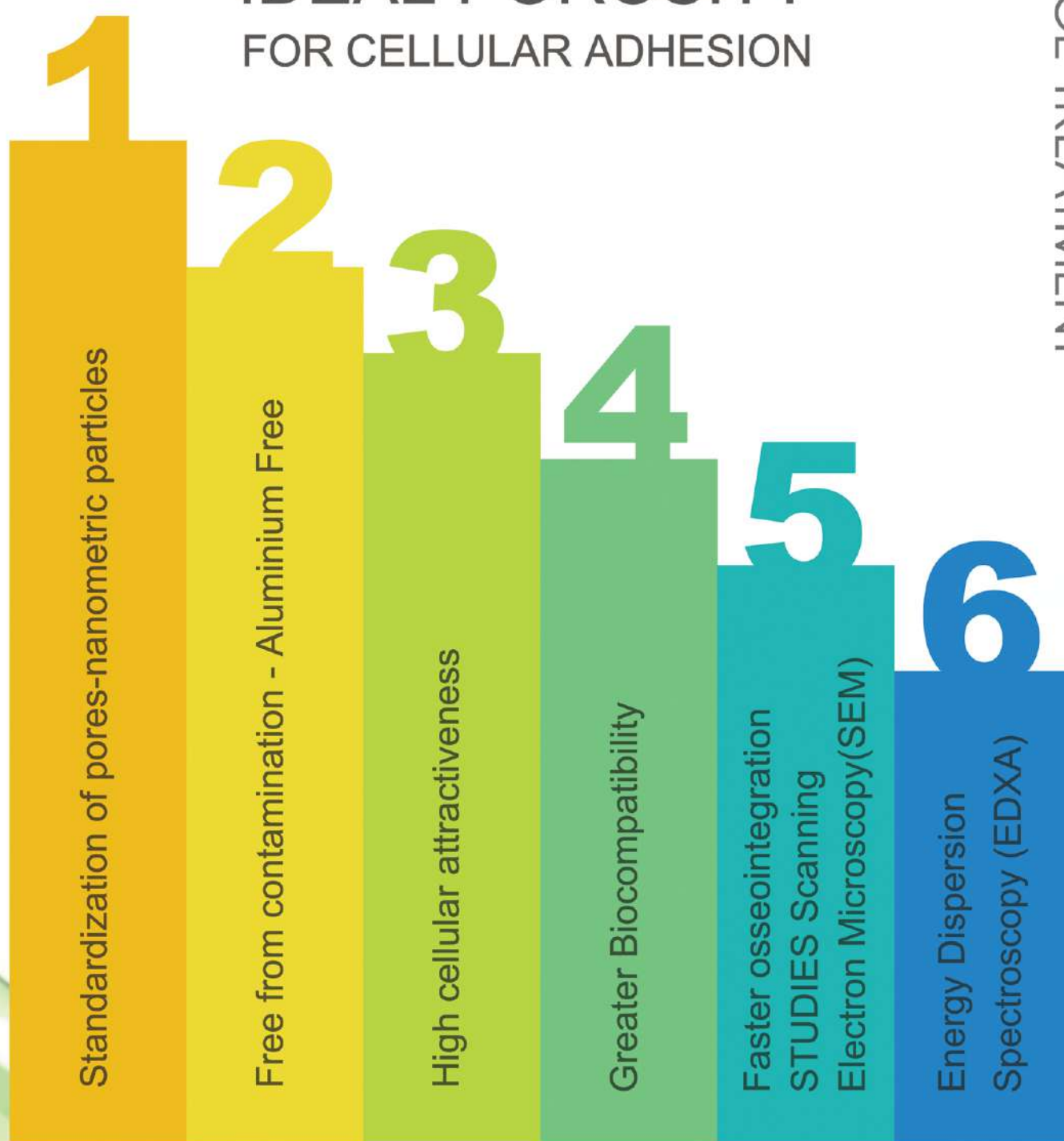
All the steps of the process to obtain the surface are based mainly in strict control of time, speed and pressure, which allows the acid concentrations to be exact.



HNS[®] HYDROPHILIC & NANO Surface Treatment

Advantages of HNS[®] HYDROPHILIC & NANO surface treatment

IDEAL POROSITY FOR CELLULAR ADHESION



LIFETIME GARANTIE

GARANTIE GMBH DENTAL IMPLANT COMPANY TAKES RESPONSIBILITY FOR ALL OF ITS PRODUCTS AND GIVES LIFE-TIME GARANTIE WHEN USED IN ACCORDANCE WITH THE SUPPLIED INSTRUCTIONS FOR USE AND THE COMPANY PROTOCOLS.

FRIENDLY SUPPORT

WE AT GARANTIE SYSTEM STRIVE TO DO MAXIMUM OF OUR BEST FOR OUR SUCCESS PARTNERS: FLEXIBILITY , AVAILABLE 24/7 CUSTOMERS SERVICE AND GIVING ALL SUPPORT

The logo for Garantie Implant System is centered on the page. It features a circular graphic composed of several colored segments (orange, green, purple, teal) arranged in a ring. In the center of this ring is the company name 'GARANTIE' in a bold, black, sans-serif font, with a registered trademark symbol (®) to its upper right. Below 'GARANTIE' is the text 'IMPLANT SYSTEM' in a smaller, red, sans-serif font. To the left of the 'G' in 'GARANTIE' are three horizontal lines of varying lengths, colored red, yellow, and black from top to bottom, resembling a stylized flag or logo element.

GARANTIE[®]
IMPLANT SYSTEM

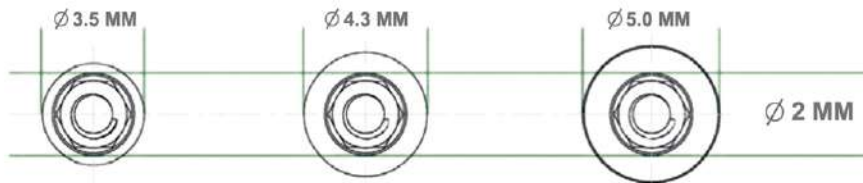
UNIQUE SURFACE TREATMENT

HNS HYDROPHILIC
AND NANO

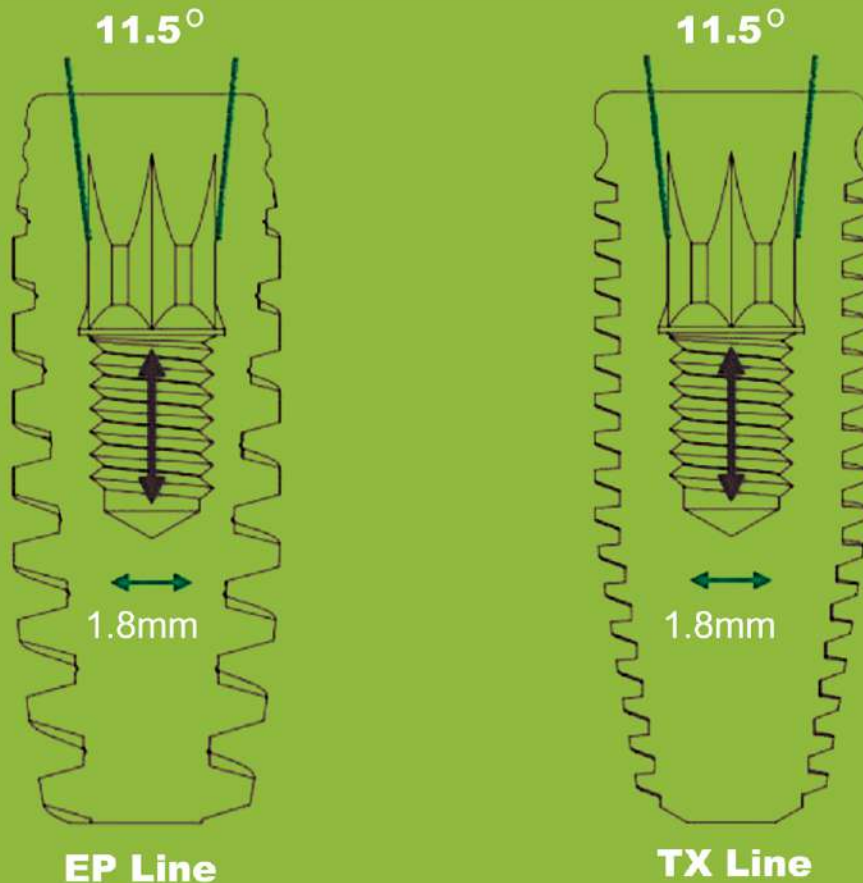
QUALITY

WE USE THE MOST PRECISE GERMAN, SWISS AND AMERICAN RAW MATERIALS AND EQUIPMENTS .

ENTER-CONEX Single Connection



The components for the ENTER-CONEX with all the diameters of the implant lines EP & TX . Thanks to special single connection Morse Taper 11.5 having an inside diameter of 2 mm , any chosen abutments can be placed in the implant, regardless of implant diameter.



PROSTHETIC SCREW

It sets abutment and implant with full conometry.

PLATFORM SWITCHING

Reduction of bone loss
Long-term aesthetic stability
Hinders bacteria infiltration
Improved emerging aesthetic profile
Force distribution

TAPER CONNECTION "MORSE-TYPE" TAPER AT 11.5° TOTAL

Cold welding
Eliminates micro-movements
Eliminates screws loosening

INTERNAL HEXAGON

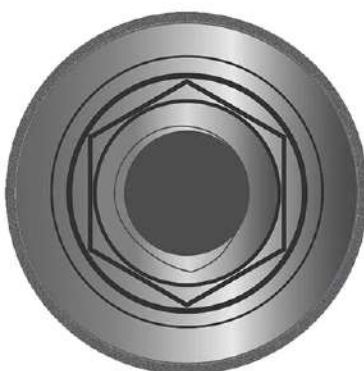
It ensures anti-rotation feature for absolute abutment positioning precision.

OUR FAMILY

- * QuickOsseo-Implants
- * Free of aluminum 100%



NEW



Compatible
Morse Taper 9°

GARANTIE IMPLANTS are conditioned in triple protection packaging.

Primary packaging:

The implant and cover screw are inserted in a tube with a lid made of **CRYSTAL OS AND EVA**. The lid has a special adhesive to protect and isolate the cover screw.

Secondary packaging:

Products are placed in **A BLISTER OF VIRGIN APET**, which is sealed with surgical grade paper.

Tertiary packaging:

Cartridge.



SEALED PACKAGING



STERILE PACKAGING

Inside each packaging you will have an implant together with a cover screw.

Sterilized

INSTRUCTION FOR USE

Necessary to explain proper use and required precautions to be adopted with the medical device.

DENTAL IMPLANT

ADDITIONAL LABELS

Useful to be applied on patient's file and documents to ensure the traceability of every implant.



IMPLANT PASSPORT

A guarantee of the quality of the implant and parts used; it also specifies traceability details and useful information for their careful management.



COVER SCREW



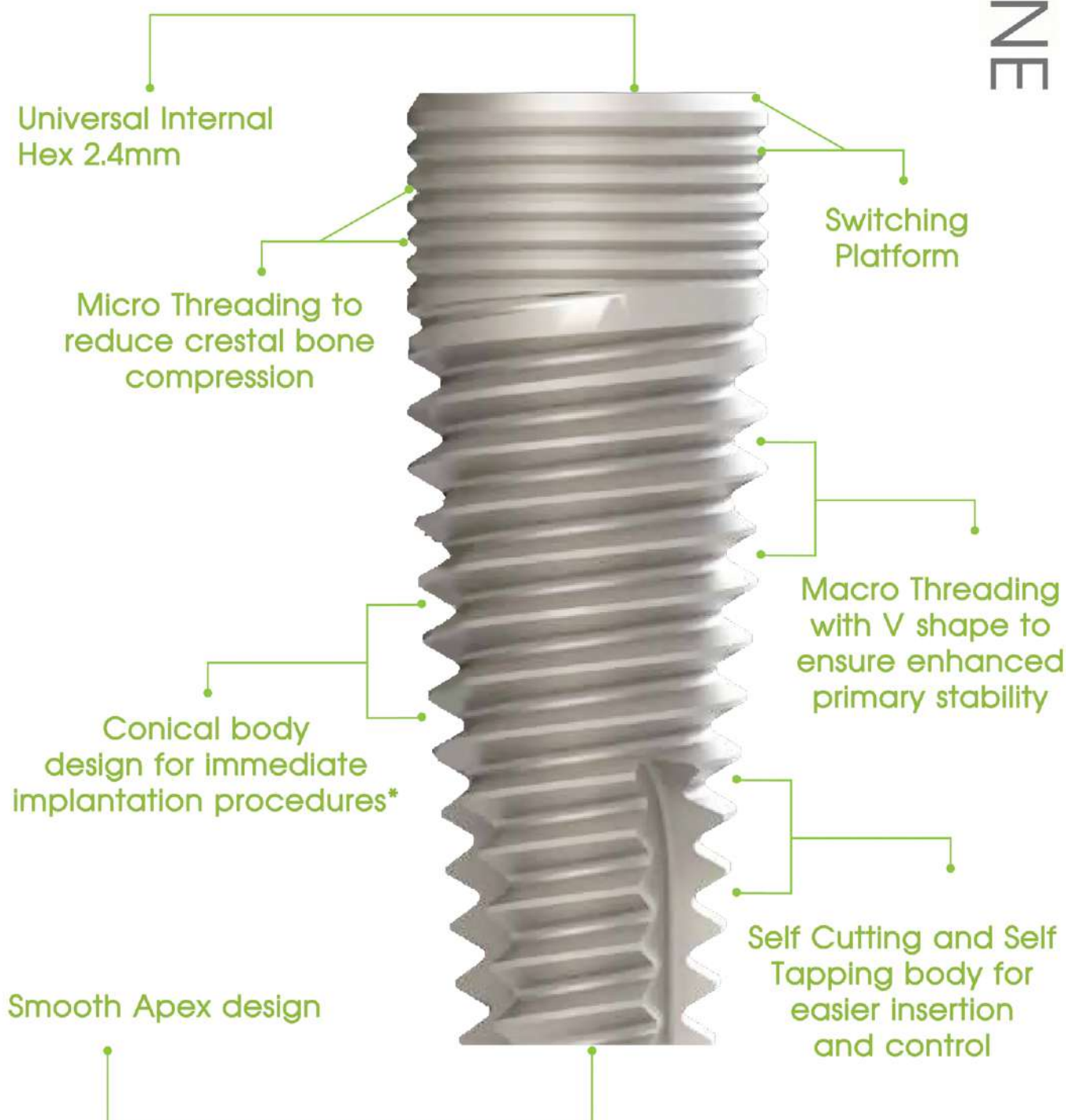
SOLO MONO

—
ALL•X

SOON

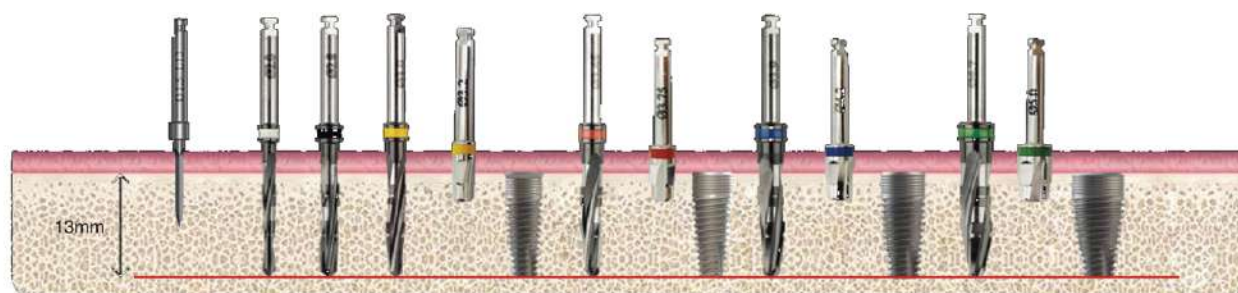


Universal Internal Hex 2.4mm



Universal Internal Hex 2.4mm

▶▶▶▶ Drilling Sequence



Ø Implant	3.3					3.75				4.2		5.0	
Ø Drill	1.5	2.0	2.8	3.0	3.2	3.45	3.75	3.9	4.2	4.7	5.0		
Ref	TCA	TCA	TCA	TCA	TDCS	TCA	TDCS	TCA	TDCS	TCA	TDCS		

Diamond like coated drills are developed with the aim to form a bone cavity for implants **Teetanium Conical** because the drill shape recreates perfectly the shape of the implant without thread.

3.3 MM	L	Code	5.0 MM	L	Code
	10	SL 3310		8	SL 5080
	11.5	SL 33115		10	SL 5010
	13	SL 3313		11.5	SL 50115
3.75 MM	L	Code	6.0 MM	L	Code
	8	SL 37580		8	SL 6080
	10	SL 37510		10	SL 6010
	11.5	SL 375115			
	13	SL 37513			
4.2 MM	L	Code			
	8	SL 4280			
	10	SL 4210			
	11.5	SL 42115			
	13	SL 4213			



ENTER-CONEX

INTERNAL HEXAGONAL & MORSE TAPER 11.5°

- Precision in positioning the prosthetic components.
- Ideal solutions by respecting the parallelism.
- Contact area increased between implant surface and abutment.
- High stability.

BACK -TAPERED CORONAL DESIGN WITH MICRO RINGS

- Less crestal resorption.
- Optimal soft tissue support.
- Maximum alveolar bone volume.

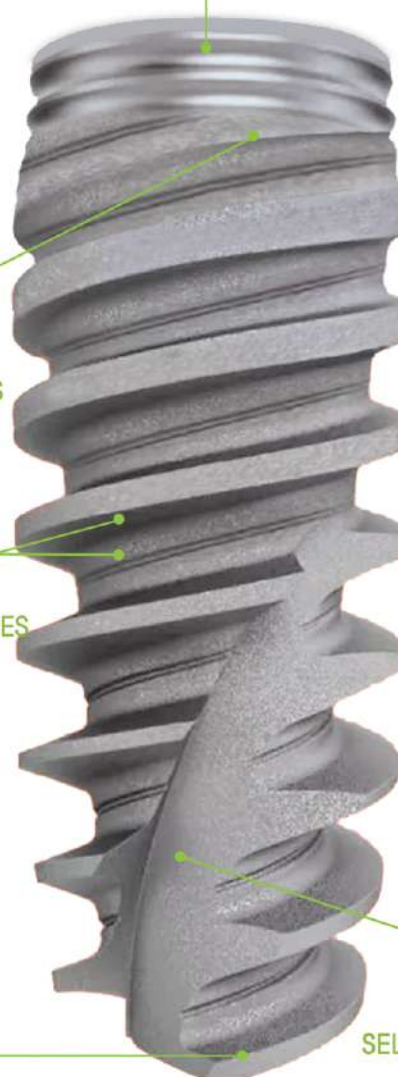
DOUBLE THREADS BODY WITH MACROSCOPIC GROOVES

- Allowing faster bone integration.
- Easy insertion and bone condensing.
- Higher primary stability.

APICAL BLADE

- Penetrate small diameter preparations.
- Optimal anchorage.

SELF TAPPING SYSTEM



EVO- PLUS

FEATURES of Evo-Plus Line :

- * Suitable for all types of bone specially in spongy bone types to obtain high primary stability thanks to double aggressive threads.
- * Comprehensive implant portfolio.
- * Ideal in Post - extraction sites.
- * High cutting power.
- * Bone condensation property Self expansion.
- * Excellent initial stability even in unfavorable bone situations.
- * Power of redirection of the implant.
- * Macroscopic grooves between implant threads allowing faster bone integration.
- * Platform Switching
- * Morse taper connection.
- * Hydrophilic & Nano surface.
- * Installation of the implant should be done 2 mm below the bone level.
- * Max recommended torque 65 N.cm.
- * Including covering screw.
- * Unique prosthetic interface.
- * Grade 4 Pure titanium.

	L	Code
3.5 MM	8.5	EP 3585
	10.0	EP 3510
	11.5	EP 35115
	13.0	EP 3513
	15.0	EP 3515

	L	Code
4.3 MM	8.5	EP 4385
	10.0	EP 4310
	11.5	EP 43115
	13.0	EP 4313
	15.0	EP 4315

	L	Code
5.0 MM	8.5	EP 5085
	10.0	EP 5010
	11.5	EP 50115
	13.0	EP 5013
	15.0	EP 5015



ENTER-CONEX

INTERNAL HEXAGONAL & MORSE TAPER 11.5°

- Precision in positioning the prosthetic components.
- Ideal solutions by respecting the parallelism.
- Contact area increased between implant surface and abutment.
- High stability.

BACK-TAPERED CORONAL DESIGN

- Less crestal resorption.
- Optimal soft tissue support.
- Maximum alveolar bone volume.

MINI DOUBLE THREADS IN TRIPLEX SHAPE

- Allowing faster bone integration.
- Easy insertion and bone condensing.
- Higher primary stability.

BONE FRIENDLY TIP



TRIPLEX LINE - TX

FEATURES of TX Line :

- * Excellent in all bone types.
- * Platform switching.
- * Indication for the implant instalation 2mm below bone level.
- * Ensures high primary stability.
- * Conical implant with conical apex with high cutting power.
- * High compaction power and bone expansion.
- * Hydrophilic & Nano surface.
- * Indication for the implant instalation 2mm below bone level.
- * Max recommended Torque of 65Ncm.
- * Grade 4

	L	Code
3.5 MM	8.5	TX 3585
	10.0	TX 3510
	11.5	TX 35115
	13.0	TX 3513
	15.0	TX 3515
	L	Code
4.3 MM	8.5	TX 4385
	10.0	TX 4310
	11.5	TX 43115
	13.0	TX 4313
	15.0	TX 4315
	L	Code
5.0 MM	8.5	TX 5085
	10.0	TX 5010
	11.5	TX 50115
	13.0	TX 5013
	15.0	TX 5015



ENTER-CONEX

INTERNAL HEXAGONAL & MORSE TAPER 9°

- Precision in positioning the prosthetic components.
- Ideal solutions by respecting the parallelism.
- Contact area increased between implant surface and abutment.
- High stability.

BACK-TAPERED CORONAL DESIGN WITH Smooth area

- Less crestal resorption.
- Optimal soft tissue support.
- Maximum alveolar bone volume.

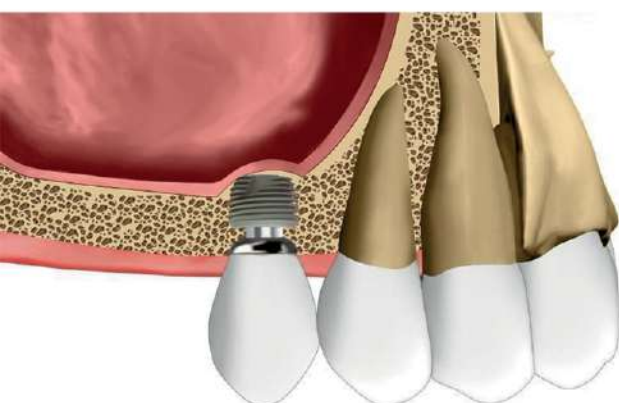
SELF TAPPING SYSTEM

APICAL BLADE

- Penetrate small diameter preparations.
- Optimal anchorage.

DOUBLE THREADS BODY

- Allowing faster bone integration.
- Easy insertion and bone condensing.
- Higher primary stability.



Morse taper connection

Maximum tightness and protection against infection, ensuring safety and reliability.

Minimal Invasiveness

Reduction of biological trauma and optimal use of the resources that oral tissues provide us with.

Double Anti-rotational System

To prevent unwanted movement of both lower and upper, ensuring a stable position.

Versatility and Ease of Use

Maximum grip and protection against infections, ensuring safety and reliability.

Inclined Platform Design

Maximizes bone contact, promoting integration and long-term stability.

Wide Emergence of Abutments

Designed to reduce the risk of peri-implantitis by following the biology of the natural tooth.

WIDE - SHORT

FEATURES of WS Line :

- Short Implant
- * Double threads with special profile
- * Conicity in the primitive diameter of the Implant thread
- * Nano Surface HMS
- PLATFORM Switching
- * Cone Morse
- * Bone level
- Max recommended torque of 45 N.cm

Maximum Security

The Morse-Cone connection and dual anti-rotational system ensure a stable and secure installation, while the inclined platform design maximizes contact with the bone, creating a solid base for prosthetic reconstruction. The minimal invasiveness of WS wide short means less stress on the oral tissues, minimizing the risk of peri-implantitis.

3.75 MM

L	Code
4.0	WS 37540
5.0	WS 37550
6.0	WS 37560
7.0	WS 37570

4.5 MM

L	Code
4.0	WS 4540
5.0	WS 4550
6.0	WS 4560
7.0	WS 4570



COVER SCREW

(TITANIUM GRADE 5)
IT IS USED TO COMPLETELY COVER THE IMPLANT AFTER PLACING IT. IMPLANT SITE REOPENING, AFTER 3 TO 6 MONTHS, REQUIRES THE USE OF THE HEALING SCREW. ONE STANDARD SIZE SCREW IS AVAILABLE INSIDE EACH IMPLANT PACKAGING

COVER SCREW



001.877

WITH EACH
PACKAGE OF
EP & TX

HEALING CAP



Ø3.3 height 0.8	877.090
Ø3.3 height 1.5	877.091
Ø3.3 height 2.5	877.092
Ø3.3 height 3.5	877.093
Ø3.3 height 4.5	877.094
Ø3.3 height 5.5	877.095
Ø3.3 height 6.5	877.096

Ø4.5 height 0.8	877.097
Ø4.5 height 1.5	877.098
Ø4.5 height 2.5	877.099
Ø4.5 height 3.5	877.100
Ø4.5 height 4.5	877.101
Ø4.5 height 5.5	877.102
Ø4.5 height 6.5	877.103

HEALING SCREW

(TITANIUM GRADE 5)
IT IS USED FOR MUCOSAL HEALING AND CONDITIONING IN CASE OF GUM REOPENING, DULY ADAPTED BY MEANS OF SUTURE. THESE COMPONENTS ARE USED TO REHABILITATE SOFT TISSUES ABOVE THE IMPLANT SO THAT THE FINAL PROSTHETIC ABUTMENT CAN BE PLACED. IT CAN BE USED FOR SURGERY IN ONE OR TWO SESSIONS.

WIDE
HEALING CAP**NEW**

Ø6.0 height 4.5 6045

OPEN TRANSFER

TO BE USED WITH OPEN TRAY HOLDER, WITH OPEN SPOON TECHNIQUE, BY SCREWING THE TRANSFER INSIDE THE IMPLANT IT WILL BE POSSIBLE TO OBTAIN A CLEAR POSITIONING IN THE IMPRESSION

OPEN TRAY
TRANSFER

376.877

⚠ Max recommended torque 10 N.cm.

CLOSE TRANSFER

USE WITH A STANDARD TRAY HOLDER WITH CLOSED -TRAY TECHNIQUE: BY TIGHTENING THE TRANSFER COPING IN THE IMPLANT AND POSITIONING GENTLY TO OBTAIN A CLEAR POSITIONING IN THE IMPRESSION.

CLOSED TRAY
TRANSFER

377.877

⚠ Max recommended torque 10 N.cm.

ANALOGUE

ANALOGUES REPRODUCE THE IMPLANT SHAPE AND CONNECTION INSIDE THE MODEL. THEY MUST BE CAREFULLY PLACED ON THE TRANSFERS INSIDE THE IMPRESSION BEFORE PROCEEDING WITH THE MODEL POURING.

ANALOGUE



003.877

UCLA ABUTMENTS

UCLA ABUTMENTS CAN BE USED FOR:

- OVER STRUCTURES.
 - CEMENTED PROSTHESIS.
 - SCREW.
 - RETAINED PROSTHESIS.
- THESE ABUTMENTS HAVE A TAPER COUPLING.

FEATURES:

- COMPLETELY CUSTOMISABLE.
- ENTER
- CONEX CONNECTION.
- IMPORTANT NOTE
- USE THE CASTABLE ABUTMENT ONLY IN CASE OF EXTREME DIVERGENT CONDITIONS.

TEMPORARY PEEK ABUTMENT

THESE TYPES OF ABUTMENTS WERE DESIGNED TO BE EASILY CUSTOMISED BOTH ON THE SPOT BY THE PRACTITIONER AND AT THE LABORATORY, BY THE TECHNICIAN AND CAN BE USED FOR:

- IMMEDIATE INSTALLATION.
- MANAGEMENT OF SOFT TISSUES IN AESTHETIC AREAS.
- TEMPORARY RETENTION OF CEMENTED OR SCREW
- RETAINED CROWNS.

THESE ABUTMENTS HAVE A TAPER COUPLING.

FEATURES:

- MADE FROM PEEK
 - EXTREMELY EASY TO ADAPT AND MODIFY
 - NEUTRAL COLOUR FOR EXCELLENT AESTHETIC RESULTS
 - COMPLETELY METAL
 - FREE -ENTER
 - CONEX CONNECTION.
- IMPORTANT NOTE PROPER POSITION OF ANGLED ABUTMENTS CAN BE CHECKED BY ENSURING THAT THE DRIVER EXTERNAL HEXAGON IS ALIGNED WITH THE INTERNAL HEXAGON.

THIS CODE INCLUDES SCREW STO-SCR 1

ANTI-ROTATIONAL
UCLA



Anti-rotational medium strap 877.130

Anti-rotational high strap 877.131

Anti-rotational low strap 877.132

! Max recommended torque 20 N.cm.

THIS CODE INCLUDES SCREW STO-SCR 1

ROTATIONAL
UCLA



Rotational medium strap 877.133

Rotational high strap 877.134

Rotational low strap 877.135

! Max recommended torque 20 N.cm.

THIS CODE INCLUDES SCREW STO-SCR 1

TEMPORARY PEEK
ABUTMENT



PK 003

TITANIUM STRAIGHT ABUTMENTS

THEY ARE TITANIUM COMPONENTS MAINLY USED FOR CEMENTED PROSTHESIS IN THE FRONT AREAS. THESE ABUTMENTS HAVE A TAPER COUPLING. FEATURES: - REDUCED NEED FOR TOUCHING - UPS THANKS TO PREPARED MUCOSAL MARGINS. - DIFFERENT TRANSMUCOSAL HEIGHTS TO ADAPT TO VARIOUS PROFILES. - CYLINDRICAL SHAPE SIMILAR TO THE EMERGING PROFILE OF A NATURAL TOOTH. - INTER - CONEX CONNECTION. IMPORTANT NOTE - NOT SUITABLE FOR DIRECT COATING WITH CERAMIC -DO NOT SHORTEN MORE THAN 3 MM ABOVE THE MUCOSAL MARGIN. - DO NOT POSITION CEMENT LIMIT MORE THAN 2 MM BELOW MUCOSAL LEVEL

THIS CODE INCLUDES SCREW STO-SCR 1

STRAIGHT ABUTMENTS



Ø 4

! Max recommended torque 20 N.cm.

Ø3.3 mm height 0.5	877.280
Ø3.3 mm height 0.8	877.281
Ø3.3 mm height 1.5	877.282
Ø3.3 mm height 2.5	877.283
Ø3.3 mm height 3.5	877.283
Ø3.3 mm height 4.5	877.285
Ø3.3 mm height 5.5	877.286
Ø4.5 mm height 0.5	877.288
Ø4.5 mm height 0.8	877.289
Ø4.5 mm height 1.5	877.290
Ø4.5 mm height 2.5	877.291
Ø4.5 mm height 3.5	877.292
Ø4.5 mm height 4.5	877.293
Ø4.5 mm height 5.5	877.294

THIS CODE INCLUDES SCREW STO-SCR 1

STRAIGHT ABUTMENTS



Ø 6

! Max recommended torque 20 N.cm.

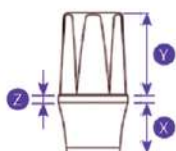
Ø3.3 mm height 0.5	877.296
Ø3.3 mm height 0.8	877.297
Ø3.3 mm height 1.5	877.298
Ø3.3 mm height 2.5	887.299
Ø3.3 mm height 3.5	877.300
Ø3.3 mm height 4.5	877.301
Ø3.3 mm height 5.5	877.302
Ø4.5 mm height 0.5	877.304
Ø4.5 mm height 0.8	877.305
Ø4.5 mm height 1.5	877.306
Ø4.5 mm height 2.5	877.307
Ø4.5 mm height 3.5	877.308
Ø4.5 mm height 4.5	877.309
Ø4.5 mm height 5.5	877.310

STRAIGHT ABUTMENTS NON HEX



NEW

877.320



X = 0,5/0,8/1,5/2,5/3,5/4,5 and 5,5mm

Y = 4 and 6mm

Z = 0,4 mm

D = Ø3,3 Ø4,5mm

TITANIUM ANGLED ABUTMENTS

THEY ARE TITANIUM COMPONENTS MAINLY USED FOR CEMENTED PROSTHESIS IN THE FRONT AREAS. THESE ABUTMENTS HAVE A TAPER COUPLING. FEATURES - REDUCED NEED FOR TOUCHING - UPS THANKS TO PREPARED MUCOSAL MARGINS. - DIFFERENT TRANSMUCOSAL HEIGHTS TO ADAPT TO VARIOUS PROFILES. - CYLINDRICAL SHAPE SIMILAR TO THE EMERGING PROFILE OF A NATURAL TOOTH. - INTER-CONEX CONNECTION. IMPORTANT NOTE - NOT SUITABLE FOR DIRECT COATING WITH CERAMIC. -DO NOT SHORTEN MORE THAN 3 MM ABOVE THE MUCOSAL MARGIN. - DO NOT POSITION CEMENT LIMIT MORE THAN 2 MM BELOW MUCOSAL LEVEL.

THIS CODE INCLUDES SCREW STO-SCR 1



Ø3.3 mm height 1.5 877.169

Ø3.3 mm height 2.5 877.170

Ø3.3 mm height 3.5 877.171

Ø3.3 mm height 4.5 877.172

Ø4.5 mm height 1.5 877.169 877.175

Ø4.5 mm height 2.5 877.170 877.176

Ø4.5 mm height 3.5 877.171 877.177

Ø4.5 mm height 4.5 877.172 877.178

⚠ Max recommended torque 20 N.cm.

THIS CODE INCLUDES SCREW STO-SCR 1



Ø3.3 mm height 1.5 877.181

Ø3.3 mm height 2.5 877.182

Ø3.3 mm height 3.5 877.183

Ø3.3 mm height 4.5 877.184

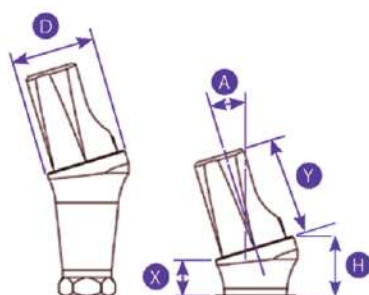
Ø4.5 mm height 1.5 877.187

Ø4.5 mm height 2.5 877.188

Ø4.5 mm height 3.5 877.189

Ø4.5 mm height 4.5 877.190

⚠ Max recommended torque 20 N.cm.



A = 17° and 30°

D = Ø3,3 and Ø4,5mm

X = 1,5/2,5 /3,5 and 4,5mm

17°/Ø3,3(H =2,4/3,4 /4,4 and 5,4mm)

30°/Ø3,3(H =3,0/4,0 /5,0 and 6,0mm)

17°/Ø4,5(H =2,7/3,7 /4,7 and 5,7mm)

30°/Ø4,5(H =3,3/4,3 /5,3 and 6,3mm)

TITANIUM ANGLED ABUTMENTS

THEY ARE TITANIUM COMPONENTS MAINLY USED FOR CEMENTED PROSTHESIS IN THE FRONT AREAS. THESE ABUTMENTS HAVE A TAPER COUPLING. FEATURES - REDUCED NEED FOR TOUCHING - UPS THANKS TO PREPARED MUCOSAL MARGINS. - DIFFERENT TRANSMUCOSAL HEIGHTS TO ADAPT TO VARIOUS PROFILES. - CYLINDRICAL SHAPE SIMILAR TO THE EMERGING PROFILE OF A NATURAL TOOTH. - INTER-CONEX CONNECTION.

IMPORTANT NOTE - NOT SUITABLE FOR DIRECT COATING WITH CERAMIC. - DO NOT SHORTEN MORE THAN 3 MM ABOVE THE MUCOSAL MARGIN. - DO NOT POSITION CEMENT LIMIT MORE THAN 2 MM BELOW MUCOSAL LEVEL.

THIS CODE INCLUDES SCREW STO-SCR 1



∅ 3.3 mm height 1.5 877.193

∅ 3.3 mm height 2.5 877.194

∅ 3.3 mm height 3.5 877.195

∅ 3.3 mm height 4.5 877.196

∅ 4.5 mm height 1.5 877.199

∅ 4.5 mm height 2.5 877.200

∅ 4.5 mm height 3.5 877.201

∅ 4.5 mm height 4.5 877.202

! Max recommended torque 20 N.cm.

THIS CODE INCLUDES SCREW STO-SCR 1



∅ 3.3 mm height/altura 1.5 877.205

∅ 3.3 mm height/altura 2.5 877.206

∅ 3.3 mm height/altura 3.5 877.207

∅ 3.3 mm height/altura 4.5 877.208

∅ 4.5 mm height 1.5 877.211

∅ 4.5 mm height 2.5 877.212

∅ 4.5 mm height 3.5 877.213

∅ 4.5 mm height 4.5 877.214

! Max recommended torque 20 N.cm.

SCAN COMPONENTS

THESE ARE COMPONENTS FOR IMPRESSION-TAKING WITH DIGITAL INTRA ORAL SCANNERS,

THE SCAN-BODIES MUST BE DIRECTLY CONNECTED TO THE IMPLANT.

IMPORTANT NOTE:

IT IS NECESSARY TO PREPARE GARANTIE DENTAL LIBRARIES WITHIN YOUR OWN DESIGN SOFTWARE TO USE THESE COMPONENTS. SEND US AN E-MAIL TO RECEIVE THE LIBRARIES.

THIS CODE INCLUDES SCREW STO-SCR 1

SCANBODY

**NEW**LONG
SCAN GA 3

THIS CODE INCLUDES SCREW STO-SCR 1

SCANBODY

**NEW**MEDIUM
SCAN GA 2MEDIUM
SCAN GA 3DIGITAL
ANALOGUE

DA 003

MUA SCANBODY



MUA TI-BASE



TI-BASE:

THEY ARE TITANIUM COMPONENTS MAINLY USED FOR CEMENTED, SCREW RETAINED TECHNIQUES AND TIGHTENED PROSTHESIS WITH DIGITAL TECHNOLOGIES, THESE ABUTMENTS HAVE A TAPER COUPLING.

FEATURES:

- TITANIUM BASE.
- COMPLETELY CUSTOMISABLE PROSTHESIS.
- USE OF CAD/CAM TECHNOLOGY TO PRODUCE ZIRCONIUM ABUTMENTS TO BE GLUED ONTO THE CENTRAL ABUTMENT.
- REDUCED NEED FOR TOUCHING
- UPS THANKS TO PREPARED MUCOSAL MARGINS.
- DIFFERENT TRANSMUCOSAL HEIGHTS TO ADAPT TO VARIOUS PROFILES.
- CYLINDRICAL SHAPE SIMILAR TO THE EMERGING PROFILE OF A NATURAL TOOTH.
- INTER-CONEX CONNECTION

THIS CODE INCLUDES SCREW STO-SCR 1

DIGITAL
TI-BASE

0.5mm	8.0mm	810.600
1.5mm	9.0mm	810.601
2.5mm	10.0mm	810.602
3.5mm	11.0mm	810.603
4.5mm	12.0mm	810.604
5.5mm	13.0mm	810.605

! Max recommended torque 20 N.cm.

THIS CODE INCLUDES SCREW STO-SCR 1

DIGITAL
TI-BASE

0.5mm	8.5mm	877.390
1.5mm	9.5mm	877.391
2.5mm	10.5mm	877.392
3.5mm	11.5mm	877.393
4.5mm	12.5mm	877.394
5.5mm	13.5mm	877.395

! Max recommended torque 20 N.cm.

THIS CODE INCLUDES SCREW STO-SCR 1

DIGITAL TI-BASE
WITHOUT HIX

0.5mm	8.5mm	877.290
1.5mm	9.5mm	877.291
2.5mm	10.5mm	877.292
3.5mm	11.5mm	877.293
4.5mm	12.5mm	877.294
5.5mm	13.5mm	877.295

! Max recommended torque 20 N.cm.

WINGS **FLAGGY** SCANBODY



ADVANTAGES:

- 1- Material : Medical peek eliminates reflections, and titanium alloy Grade 23 ELI ensures a tight connection with the implant.
- 2- Durability : which up to 120 sterilizations cycles.
- 3- Precision of scanning : Provided by the geometry of the shape and marks.
- 4- Passivity : High precision of cases based on intraoral scans.
- 5- Predictability : For the most complicated cases.
- 6- Continuity of scanning : Smooth image registering with a standard intraoral scanner.
- 7- Time saving.

STRAIGHT MULTI-USE ABUTMENTS

STRAIGHT MULTI-USE ABUTMENTS MUST BE FIXED DIRECTLY TO THE IMPLANT USING A MULTI-USE DRIVER (A MANUAL ONE OR WITH A TORQUE RATCHET).

MUA STRAIGHT

height 0.8	877.010
------------	---------

height 1.5	877.011
------------	---------

height 2.5	877.012
------------	---------

height 3.5	877.013
------------	---------

height 4.5	877.014
------------	---------

height 5.5	877.015
------------	---------

! Max recommended torque 32 N.cm.

THIS CODE INCLUDES SCREW MUA-SCR 1

ANGLED MULTI-USE ABUTMENTS

ANGLED MULTI-USE ABUTMENTS AT 17 AND 30 DEGREES HELP ACHIEVING PARALLELISM IN CASE OF IMPLANTS HAVING A DIFFERENT INCLINATION. EASY CONNECTION TO THE IMPLANT USING A PREASSEMBLED TRANSFER MUA HOLDER (IT'S AVAILABLE INSIDE EACH ANGLED MUA PACKAGE) THEN, THEY ARE FASTENED BY A PROSTHETIC SCREW. INCLUDES SCREW CODE- 01730 .

MUA ANGLED 17°

height 1.5	877.021
------------	---------

height 2.5	877.022
------------	---------

height 3.5	877.023
------------	---------

height 4.5	877.024
------------	---------

! Max recommended torque 20 N.cm.

THIS CODE INCLUDES SCREW MUA-SCR 1

MUA ANGLED 30°

height 1.5	877.026
------------	---------

height 2.5	877.027
------------	---------

height 3.5	877.028
------------	---------

height 4.5	877.029
------------	---------

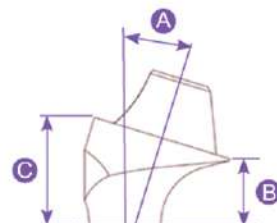
! Max recommended torque 20 N.cm.

A=17° and/y 30°

B=1,5/2,5/3,5/4,5mm

17° C=2,8/3,8/4,8/5,8mm

30° C=4,0/5,0/6,0/7,0mm



MUA TRANSFER

THE TRANSFER MUST BE

PLACED ONTO THE

MUA TO ACCURATELY

ADJUST THE POSITION.

IN THIS CASE, USE THE

MUA ANALOGUE.

MUA ANALOGUE

ANALOGUES REPRODUCE THE IMPLANT SHAPE AND CONNECTION INSIDE THE MODEL. THEY MUST BE CAREFULLY PLACED ON THE TRANSFERS INSIDE THE IMPRESSION BEFORE PROCEEDING WITH MODEL POURING

MUA HEALING CAP

IT IS USED FOR MUCOSAL HEALING AND CONDITIONING, ON TOP OF MUAS. THESE COMPONENTS ARE USED TO REHABILITATE SOFT TISSUES ABOVE THE IMPLANT SO THAT THE FINAL PROSTHETIC ABUTMENT CAN BE PLACED.

MUA OPEN
TRAY TRANSFER



002.849

! Max recommended torque 10 N.cm.

MUA CLOSED
TRAY TRANSFER



001.850

! Max recommended torque 10 N.cm.

MUA ANALOGUE



002.812

MUA HEALING
CAP



001.802

! Max recommended torque 10 N.cm.

SLEEVES & TEMPORARY

FOR MUA

THESE ABUTMENTS

MUST BE FIXED ONTO

THE MUAS TO

BUILD STRUCTURES.

THIS CODE INCLUDES SCREW MUA-SCR 2

MUA CASTABLE
ABUTMENT

001.861

! Max recommended torque 10 N.cm.

THIS CODE INCLUDES SCREW MUA-SCR 2

MUA TEMPORARY
ABUTMENT

002.861

! Max recommended torque 10 N.cm.

ALL ON FOUR
GUIDE ARCH

001.899

BALL & SOCKET ABUTMENTS

THESE ABUTMENTS ALLOW TO STABILIZE MOBILE PROSTHESIS IN LOWER AND UPPER JAWS.

FEATURES:

- SETTING OFF UP TO 20° DIVERGENCE BETWEEN TWO IMPLANTS
- EXCELLENT LONG-TERM PERFORMANCE THANKS TO WEAR
- RESISTANT COMPONENTS.
- MINIMUM HEIGHT OF THE COMPONENT, SUITABLE FOR NARROW OCCLUSAL SPACE.

O'RING
OVERDENTURE



height/altura 0.8 877.330

height/altura 1.5 877.331

height/altura 2.5 877.332

height/altura 3.5 877.333

height/altura 4.5 877.334

! Max recommended torque 32 N.cm.

METAL
HOUSING



001.804

RUBBER RING
REPOSITION



001.806

O'RING SILICONE
SPACER RING



002.804

BALL & SOCKET ABUTMENTS

THESE ABUTMENTS ALLOW TO STABILIZE MOBILE PROSTHESIS IN LOWER AND UPPER JAWS.

FEATURES:

- SETTING OFF UP TO 20° DIVERGENCE BETWEEN TWO IMPLANTS
- EXCELLENT LONG-TERM PERFORMANCE THANKS TO WEAR
- RESISTANT COMPONENTS.
- MINIMUM HEIGHT OF THE COMPONENT, SUITABLE FOR NARROW OCCLUSAL SPACE.

LOCATOR



003.825

⚠ Max recommended torque 20 N.cm.

LOCATOR



004.825

⚠ Max recommended torque 20 N.cm.

OT EQUATOR



001.880

002.880

003.880

⚠ Max recommended torque 20 N.cm.

OT EQUATOR



004.880

005.880

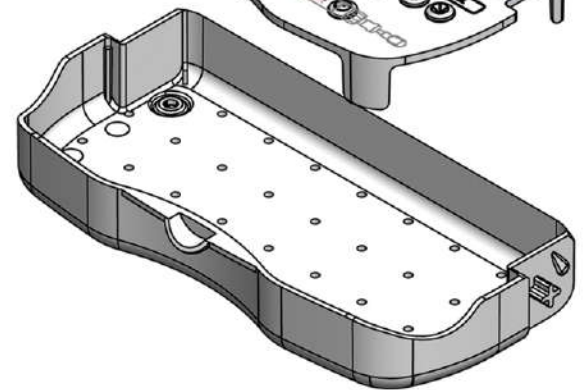
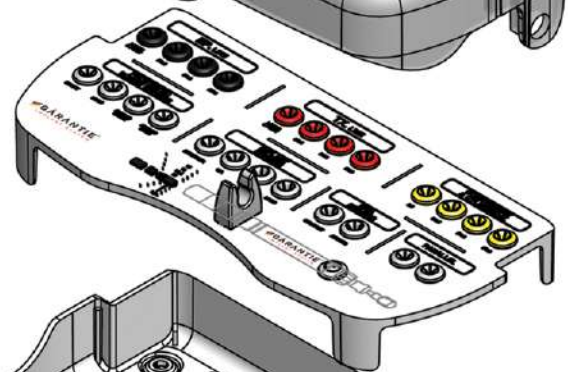
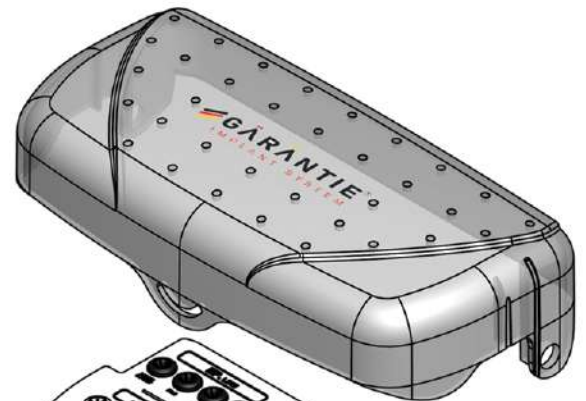
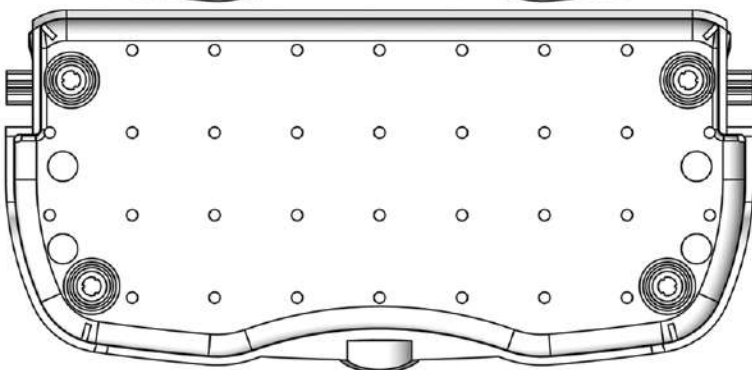
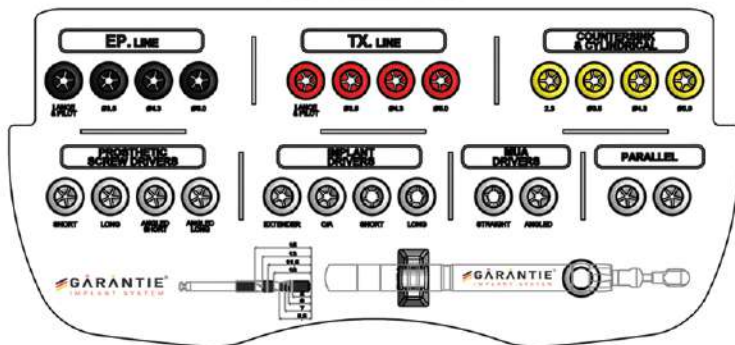
006.880

⚠ Max recommended torque 20 N.cm.

GARANTIE Kit

Quality of our trays :

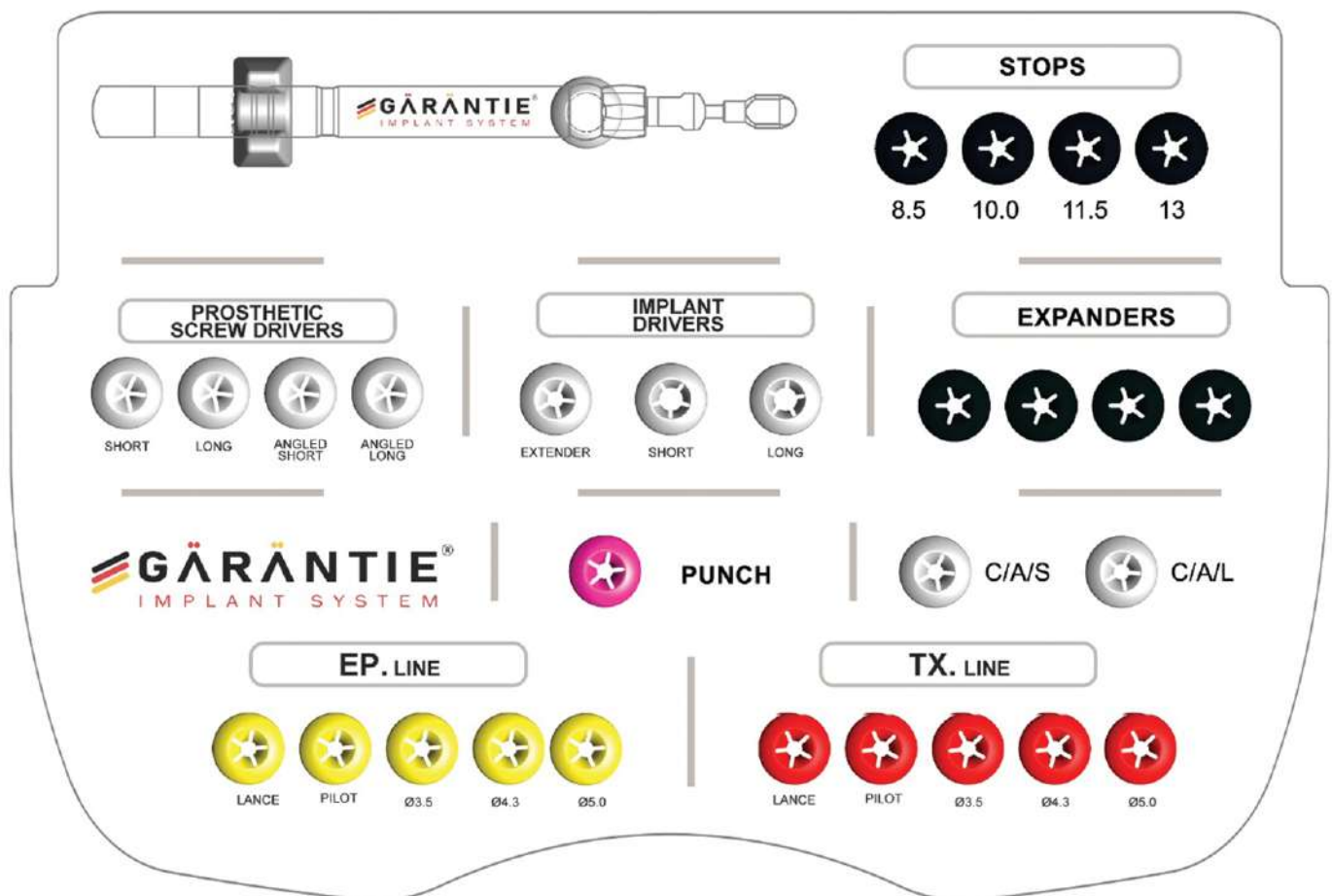
- * Raw material PPSU.
- * Great lightness
- * Greater protection to instruments thanks to low wear due to friction.
- * Does not oxidize.
- * It has no stains.
- * High Impact resistance, maintaining its new appearance.
- * Easy sanitization.
- * High heat resistance (over 190°).




























GARANTIE Kit

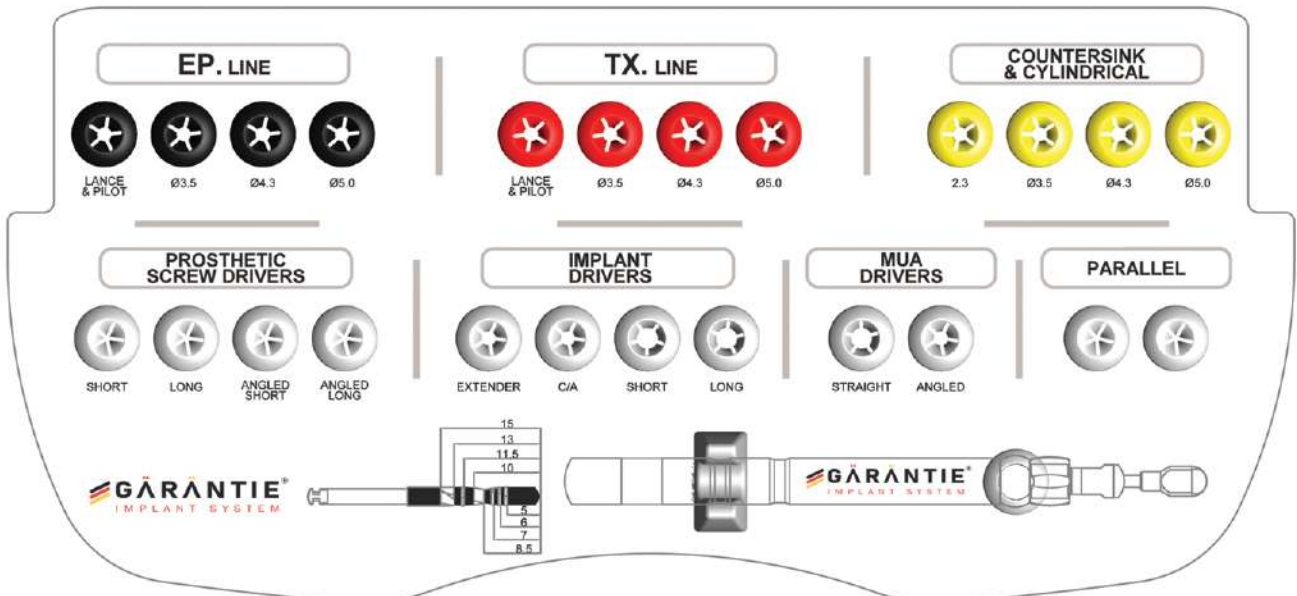
Quality of our trays :

- * Raw material PPSU.
- * Great lightness
- * Greater protection to instruments thanks to low wear due to friction.
- * Does not oxidize.
- * It has no stains.
- * High impact resistance, maintaining its new appearance.
- * Easy sanitization.
- * High heat resistance (over 190°).



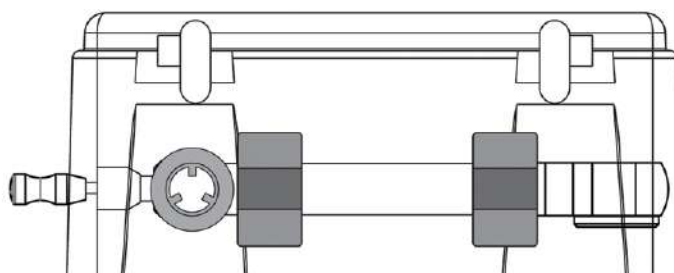
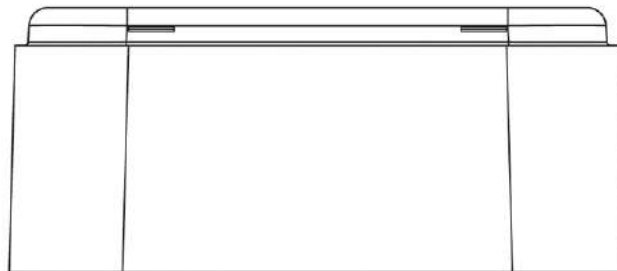
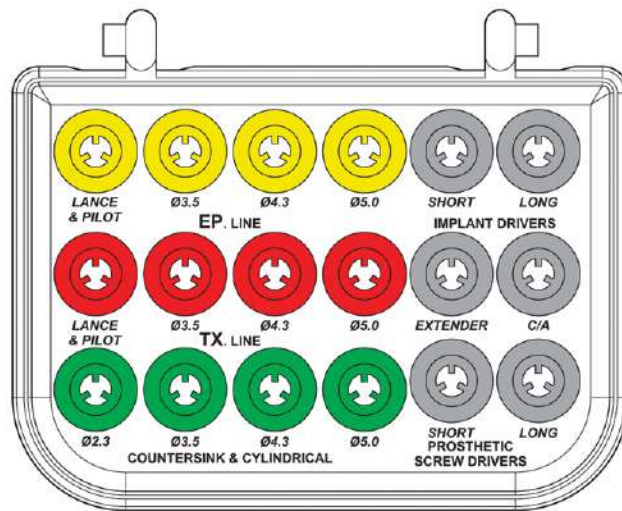
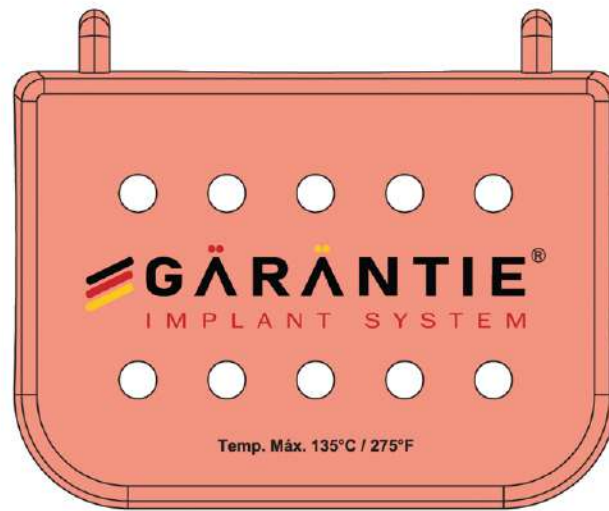
GARANTIE Compact Kit

EP. LINE	 REF. EP. 02 LANCE & PILOT	 REF. EP. 280 DRILL 3.5	 REF. EP. 315 DRILL 4.3	 REF. EP. 380 DRILL 5.0
TX. LINE	 REF. TX. 02 LANCE & PILOT	 REF. TX. 350 DRILL 3.5	 REF. TX. 430 DRILL 4.3	 REF. TX. 500 DRILL 5.0
COUNTERSINK & CYLINDRICAL	 REF. CS. 23 COUNTERSINK & CYLINDRICAL	 REF. CS. 35 COUNTERSINK & CYLINDRICAL	 REF. CS. 43 COUNTERSINK & CYLINDRICAL	 REF. CS. 50 COUNTERSINK & CYLINDRICAL
PROSTHETIC SCREW DRIVERS	 REF. SH. 50 SHORT SCREW DRIVER 1.2	 REF. LO. 55 LONG SCREW DRIVER 1.2	 REF. SHA. 50 SHORT SCREW DRIVER 0.9	 REF. LOA. 55 LONG SCREW DRIVER 0.9
IMPLANT DRIVERS	 REF. EXT. 01 EXTENDER	 REF. CA. 02 C/A IMPLANT DRIVER	 REF. S. 01 SHORT DRIVER	 REF. L. 01 LONG DRIVER
MUA DRIVERS	 REF. MU. AS STRAIGHT MUA DRIVER	 REF. MU. AA ANGLED MUA DRIVER	 REF. PR. 10 PARALLEL DIRECTION PIN	 REF. PR. 10 ANGLED DIRECTION PIN
TORQUE RATCHET				REF. TR. 65 TORQUE RATCHET



GARANTIE Small Kit

SURGICAL KIT





CMI height meter

CODE CHM-1



CODE ART - 11

GARANTIE Drills

Drills for EP line



Drills for TX line



1

Drills are available in sequential diameters.

Made of surgical steel with special layer, they must be used with external irrigation.

3

Drills are identified by laser-marked with the corresponding diameter.

2

The grooves on the edges help when preparing the implant site length.

Presence of 8 laser-marked notches indicating depth.

4

5

Lance x Pilot

2X1



You will find out two of our
“ Lance and pilot “
drill in **GARANTIE** Surgical kits .

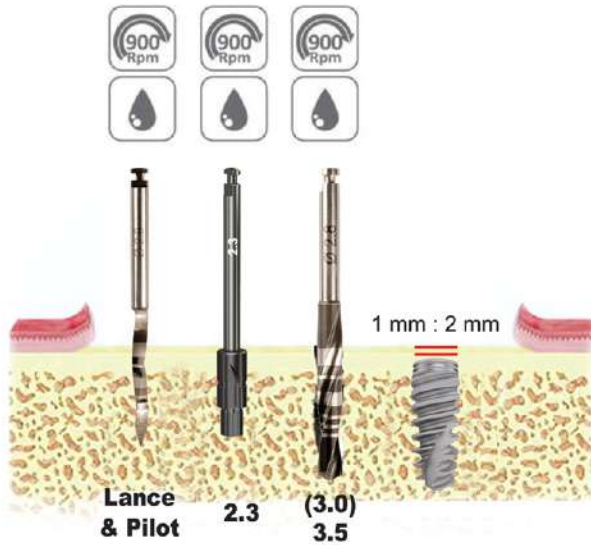
Pilot 2.0

Lance 1.5

EP Drilling Procedure

Suitable for use in hard bone (D1-D2)

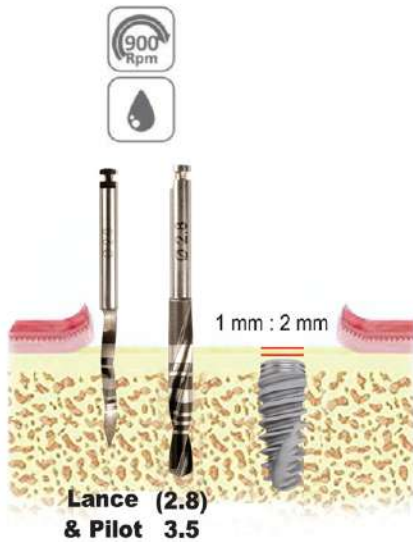
EP 3.5



⚠ Max recommended torque 65 N.cm.

Suitable for use in Soft & Extra Soft bone (D3-D4-D5)

EP 3.5

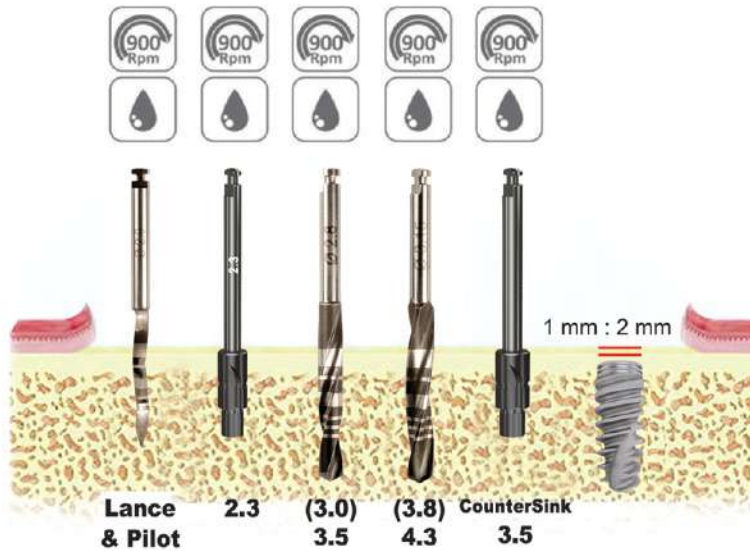


⚠ Max recommended torque 65 N.cm.

EP Drilling Procedure

Suitable for use in hard bone (D1-D2)

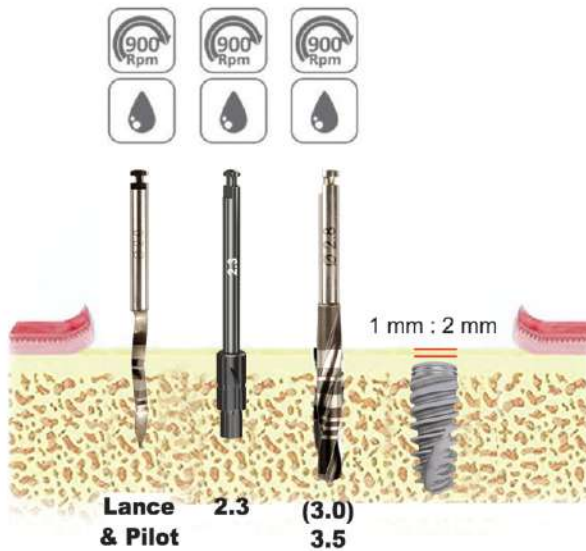
EP 4.3



⚠ Max recommended torque 65 N.cm.

Suitable for use in Soft & Extra Soft bone (D3-D4-D5)

EP 4.3

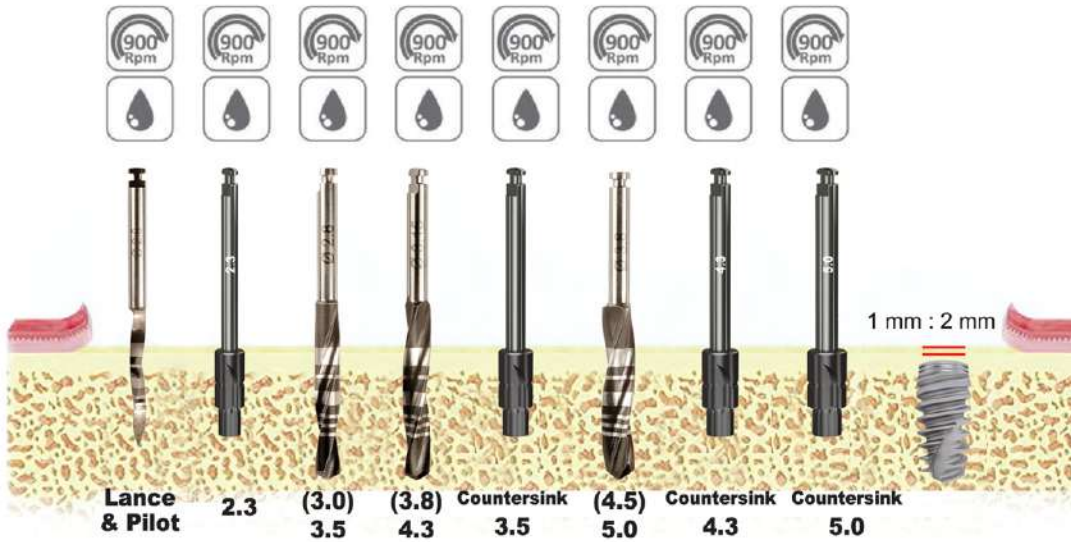


⚠ Max recommended torque 65 N.cm.

EP Drilling Procedure

Suitable for use in hard bone (D1-D2)

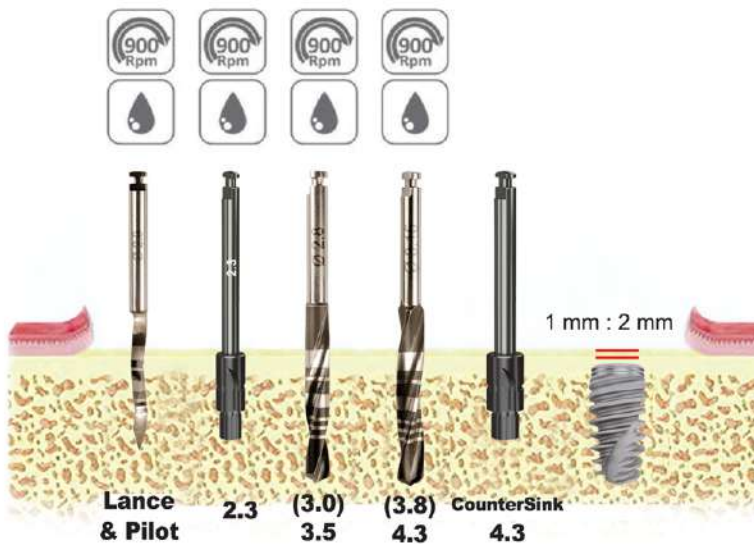
EP 5.0



⚠ Max recommended torque 65 N.cm.

Suitable for use in Soft & Extra Soft bone (D3-D4-D5)

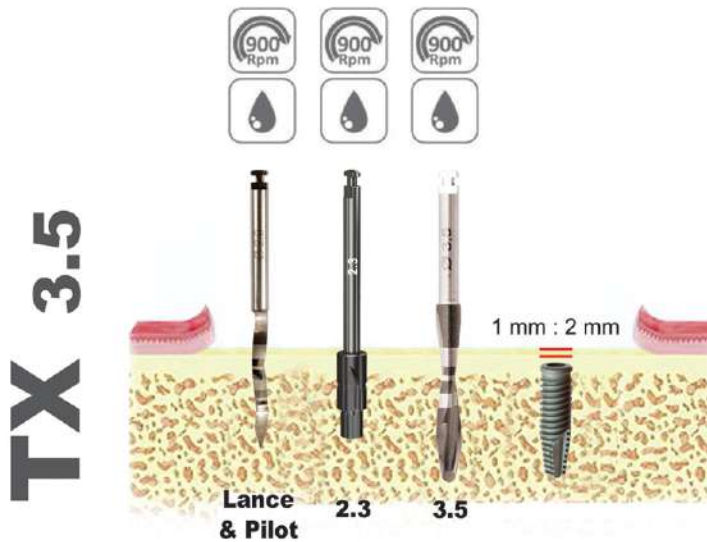
EP 5.0



⚠ Max recommended torque 65 N.cm.

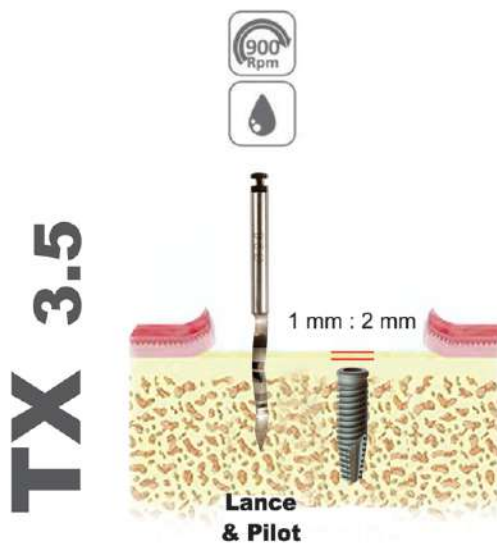
TX Drilling Procedure

Suitable for use in hard bone (D1-D2)



! Max recommended torque 65 N.cm.

Suitable for use in Soft & Extra Soft bone (D3-D4-d5)

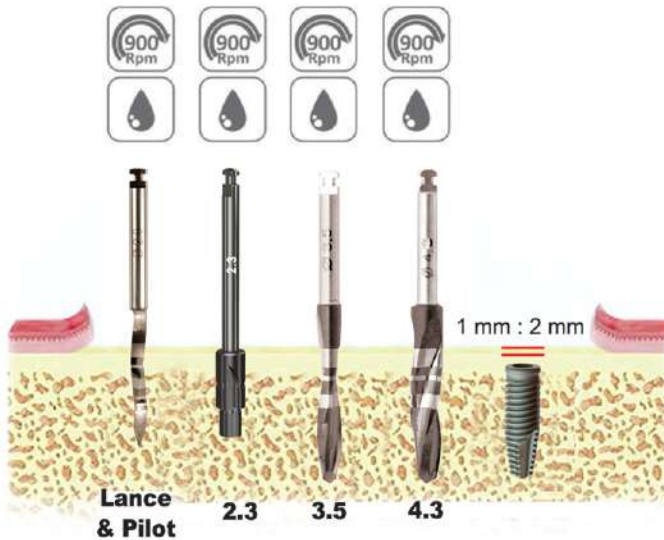


! Max recommended torque 65 N.cm.

TX Drilling Procedure

Suitable for use in hard bone (D1-D2)

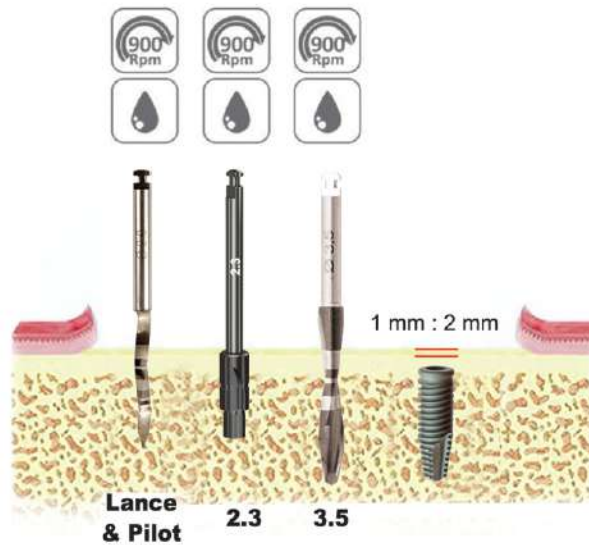
TX 4.3



⚠ Max recommended torque 65 N.cm.

Suitable for use in Soft & Extra Soft bone (D3-D4-d5)

TX 4.3

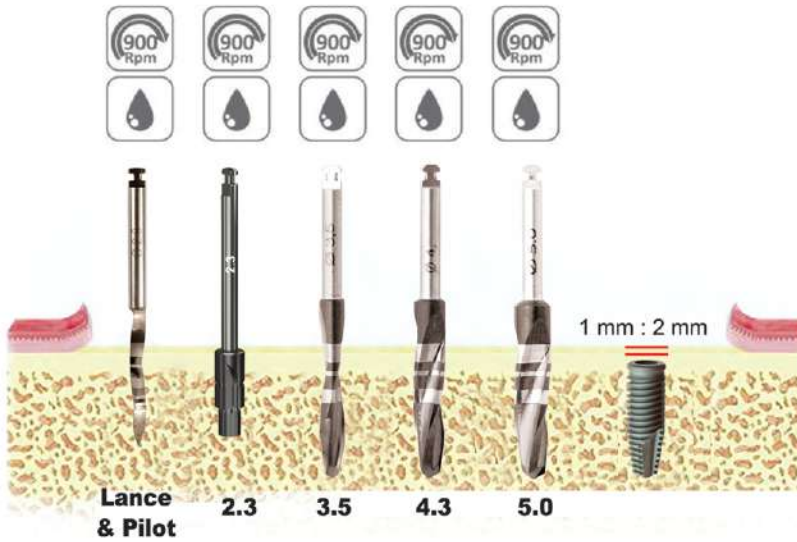


⚠ Max recommended torque 65 N.cm.

TX Drilling Procedure

Suitable for use in hard bone (D1-D2)

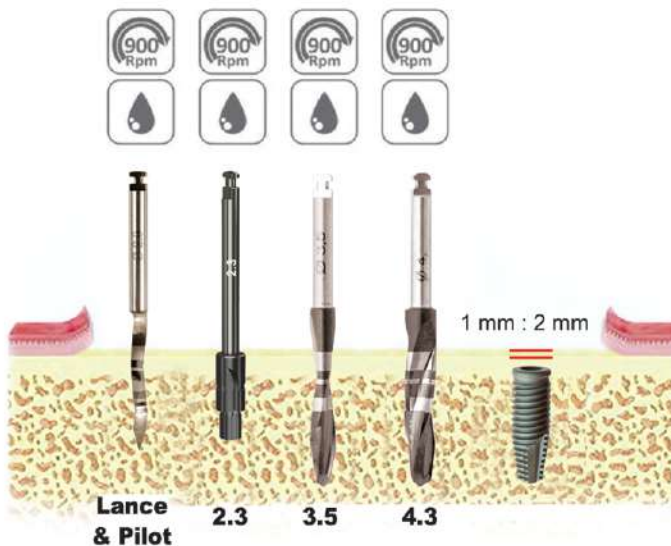
TX 5.0



⚠ Max recommended torque 65 N.cm.

Suitable for use in Soft & Extra Soft bone (D3-D4-d5)

TX 5.0



⚠ Max recommended torque 65 N.cm.

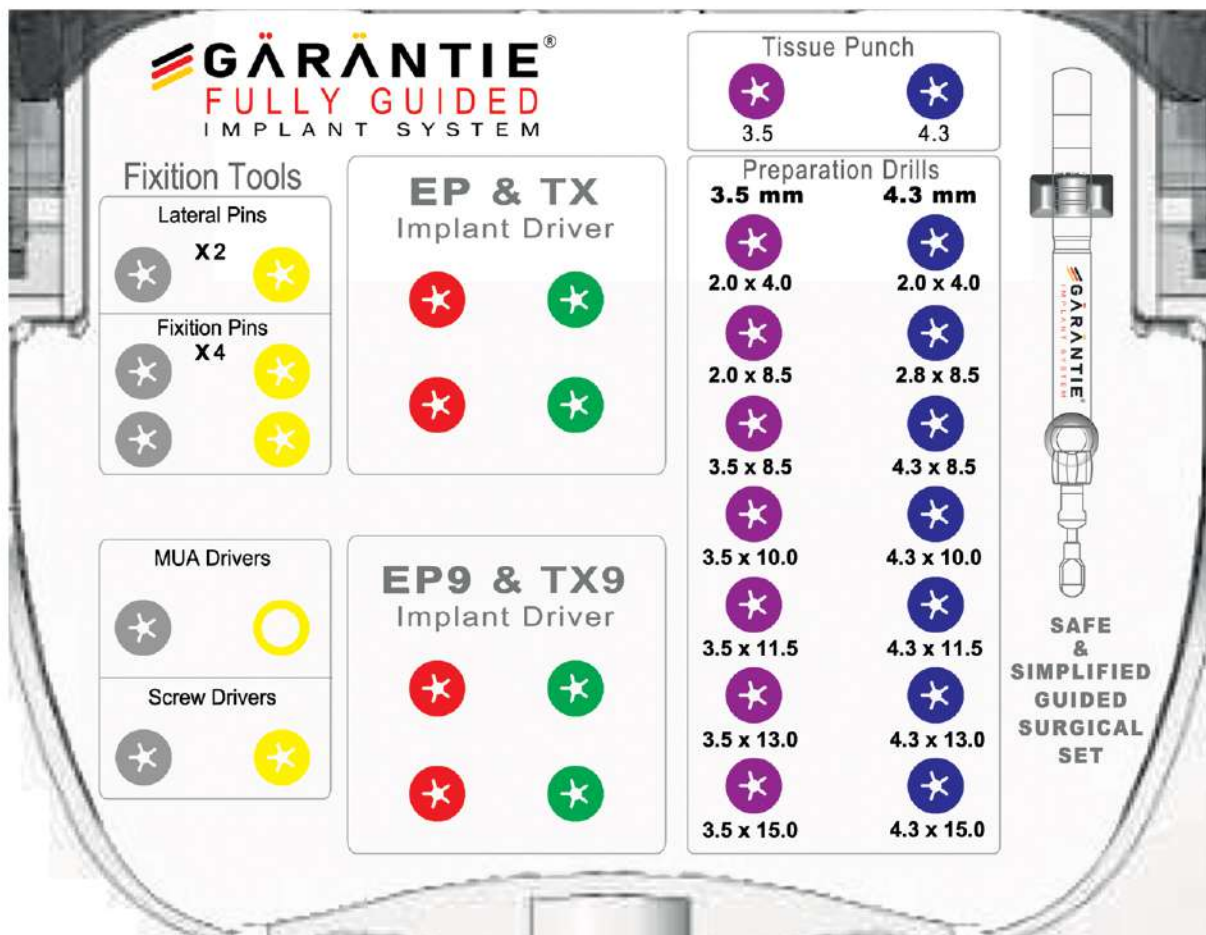
GÄRÄNTIE® FULLY GUIDED IMPLANT SYSTEM

-GUIDED SURGERY KIT

SIMPLE & ADVANCED FOR
BEGINNERS & PROFESSIONALS



GUIDED SURGERY KIT





 **GÄRÄNTIE**[®]
IMPLANT SYSTEM



www.garantiezahn.com



Donarstr. 13 51107 Köln, Germany.



+49 163 3388610

MADE IN GERMANY